

K-STATE

Research and Extension

Sedgwick County

May 2025 *eNews*

"Knowledge for Life"

[Click here for all of our Spring 2025 events!](#)

Horticulture

2025 Spring Garden Fair

Water – Every Drop Counts

Water-Smart Gardening for a Greener Tomorrow

Saturday May 3rd, 2025
7 a.m. to 1 p.m.

INTERACTIVE BOOTHS

- ◆ Native Plants For Drought
- ◆ Water-Wise Landscaping
- ◆ Drip Irrigation Basics
- ◆ The Earth's Water Supply
- ◆ The Journey of Water
- ◆ Tracking Water Use
- ◆ Rain Barrels

GUIDED TOURS

- ◆ 8:30am – Arboretum Trees
- ◆ 9:00am – Daylily Garden
- ◆ 9:30am – Compost
- ◆ 10:00am – Demo Garden
- ◆ 10:30am – Pollinator Garden
- ◆ 11:00am – Nature Trail
- ◆ 11:30am – Water-Wise Plants

ACTIVITIES

- ◆ Plant Sales
- ◆ Make & Take Youth Activities
- ◆ Rain Gauge Give Away
- ◆ Food Sales
- ◆ Visit Area Garden Clubs

*Free, Inside The Sedgwick County
Extension Education Center*

7001 W. 21st Street N, Wichita, KS 67205



www.sedgwick.ksu.edu/events

K-State Research and Extension is an equal opportunity provider and employer. K-State Research and Extension is committed to providing equal opportunity for participation in all programs, services and activities. Program information may be available in languages other than English. Language access requests and reasonable accommodations for persons with disabilities, including alternative means for communication (e.g., Braille, large print, audio tape, and American Sign Language), may be requested by contacting the event contact Matthew McKernan four weeks prior to the start of the event (April 5, 2025) at (316)-660-0140 or mckernan@ksu.edu. Requests received after this date will be honored when it is feasible to do so. Language access services, such as interpretation or translation of vital information will be provided free of charge to limited English proficient individuals upon request. Kansas State University Agricultural Experiment Station and Cooperative Extension Service.

K-STATE
Research and Extension



Master Gardener
Sedgwick County
*Sedgwick County...
working for you*

Make Every Drop Count: 2025 Spring Garden Fair Offers Drought Solutions

Join us this Saturday, May 3, 2025 for the 2025 Spring Garden Fair! With drought restrictions continuing into a new gardening season, the

Sedgwick County Extension Master Gardeners take aim at helping the community address this issue with this free, family-friendly event. This year's theme is "Water – Every Drop Counts", with all of the booths and hands-on activities focused on empowering individuals to adopt water-efficient gardening methods that will help conserve our most precious resource.

This all-ages event will be open from 7:00 am to 1:00 pm, and will be held in 4-H Hall of the Sedgwick County Extension Education Center at 7001 W. 21st Street North in Wichita (SE corner of 21st and Ridge Road). Admission is free, and the first 200 visitors will also receive a free rain gauge. Attendees will discover sustainable, easy-to-implement water saving solutions through interactive booths, kids' activities, guided tours of water-wise gardens, plant sales, visits with area Garden Clubs, and more. [Learn more about the 2025 Spring Garden Fair here.](#)



Heat Loving Perennials for Kansas

Wednesday, May 7th 12:00PM -1:00PM CST

Discover the beauty and resilience of heat-loving perennials that thrive in Kansas' climate.

Join Jason Graves, Central Kansas Extension District Horticulture Agent, for tips on selecting and caring for low-maintenance, drought-tolerant, plants that add color and texture to your landscape. This session will provide practical advice for creating a thriving garden in even the harshest of Kansas environments.



Register Here!



Please register for this free Zoom Webinar at:
ksre-learn.com/KStateGardenHour



While summertime temperatures may sizzle, there is a wide array of beautiful, heat-loving plants that thrive in the intense Kansas summers. Learn about these often low-maintenance and drought-tolerant plants that can add color and texture to your landscape. Join the next K-State Garden Hour webinar on Wednesday, May 7, 2025, to learn more about “Heat Loving Perennials for Kansas”. Jason Graves, Central Kansas Extension District Horticulture Agent, will share ideas on plants for your landscape that are heat-loving heroes and built for summer survival. This free webinar will be presented live from Noon to 1pm, and recorded and available online. Register for upcoming webinars or find past recordings online at: www.ksre-learn.com/KStateGardenHour

2025 GARDEN TOUR

Sedgwick County Extension Master Gardeners
Visit 6 private gardens

Friday May 30, 9-5

Tickets \$10

Saturday May 31, 9-5

Available online at
sedgwick.ksu.edu/gardentour
or the Sedgwick County
Extension Office
or at the gardens during the tour

Sunday June 1, 12-4



Sedgwick County
working for you

K-STATE
Research and Extension

Master Gardener
Sedgwick County

K-State Research and Extension is an equal opportunity provider and employer. K-State Research and Extension is committed to providing equal opportunity for participation in all programs, services and activities. Program information may be available in languages other than English. Language access requests and reasonable accommodations for persons with disabilities, including alternative means for communication (e.g., Braille, large print, audio tape, and American Sign Language), may be requested by contacting the event contact Matthew Williams four weeks prior to the start of the event (May 2, 2025) at (316) 643-3140 or mwilliams@ksu.edu. Requests received after this date will be honored when it is feasible to do so. Language access services, such as interpretation or translation of vital information will be provided free of charge to limited English proficient individuals upon request.
Kansas State University, Agricultural Experiment Station and Cooperative Extension Service

Save the Date: 2025 Garden Tours Showcase Drought-Resilient Beauty

The annual Garden Tour is back for 2025 with an inviting array of thoughtfully designed gardens that emphasize water conservation, sustainability, innovation, and support for pollinators and wildlife.

Scheduled for Friday, May 30th – Sunday, June 1st, this year's tour includes four inviting private gardens as well as two beautiful gardens on the Wichita State University campus, each offering its own unique beauty and endless ideas for your own garden. Tickets are \$10 per person, and children 12 and under are welcomed free with adult. For more information about 2025 Garden Tour hours, to see sneak peek photos of each garden, or to purchase your tickets, visit our website: <https://sedgwick.ksu.edu/gardentour>

Local Food

JUST ONE ROW CAN MAKE A DIFFERENCE TO OTHERS IN OUR COMMUNITY



PLANT A ROW

Is a local partnership between Sedgwick County Extension Master Gardeners and ICT Food Rescue to encourage, collect and deliver donations of fresh, healthy produce from home and community gardens to food insecure neighbors in need at no cost.

**Begin Donating
June 1, 2025**



Kansas State University Agricultural Experiment Station and Cooperative Extension Service
K-State Research and Extension is an equal opportunity provider and employer.

DROP-OFF LOCATIONS

Brady Nursery 11200 W. Kellogg	Botanica 701 Amidon St.
Hillside Feed & Seed 1805 S. Hillside	Hillside Nursery 2200 S. Hillside
Johnson's Garden Center - East 6225 E. Shadybrook	Johnson's Garden Center - West 2707 W. 13th St.
Woodard Mercantile 4160 N. Maize Rd Maize	Mr. Mc's Market 1901 E 21st St. N
Woodard Mercantile 1313 E. Hwy 54 Andover	Valley Feed & Seed 1903 S. Meridian

K-STATE
Research and Extension

Master Gardener
Sedgwick County



Sedgwick County...
working for you



For more than 20 years, *Plant a Row* program has celebrated the tradition of gardeners generously sharing their harvests to help others. We invite home gardeners, hobby farmers, and community garden groups to join the effort to fight hunger by growing a little extra—vegetables, fruits, or herbs—with the intention of donating.

Here in Sedgwick County, a partnership between Extension Master Gardener volunteers and ICT Food Rescue makes it easy to give back. Fresh donations dropped off at designated collection sites are quickly turned into nutritious food for local families, seniors, shelter residents, and children in daycare.

The 2025 *Plant a Row* season kicks off June 1. Now is the perfect time to plan and plant that extra row—for a neighbor in need.

Visit our Plant A Row page for more

information: <https://www.sedgwick.k-state.edu/local-food/plantarow.html>

If you are looking for a place to garden, plant an extra row, or volunteer with a garden, we maintain a list of gardens around the area. See the flyer for a list of community gardens with openings this year!

For other area community gardens, visit the ICT Food Circle Local Foods Directory at <https://ictfoodcircle.org/local-food-directory/>

Health and Nutrition

May is American Stroke Month-- Know Your Numbers, Protect Your Heart

High blood pressure is a leading risk factor for stroke—but it's often silent. That's why it's so important to check regularly.

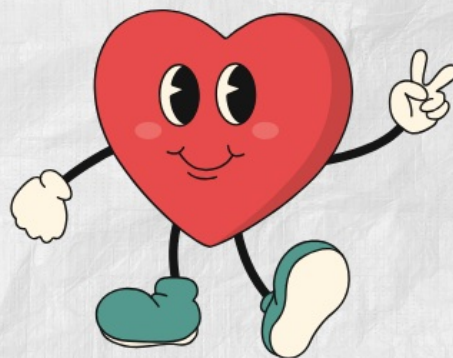
□ Through the **Libraries with Heart** program, you can now *check out* a blood pressure monitoring kit just like a book—free, simple, and lifesaving. Stop by your local library and take a step toward better health today.

Don't have a blood pressure monitor? Check one out at the library!



Participating locations:

- Wichita Public Libraries
- Mt. Hope Public Library
- Clearwater Public Library
- Valley Center Public Library
- Haysville Community Library
- Mulvane Public Library



Learn more at: <https://bit.ly/SGColibrarieswithheart>

Agriculture



TRACTOR

SAFETY

To receive certification, students will be required to complete independent coursework and a driving test administered by their employer, along with the in-person class. The course will cover safe tractor and machine operation.



**Pre-Registration
Required by
Tuesday, May 27**

<https://bit.ly/TracSafe25>

DETAILS

- Thursday; May 29, 2025
- Mulvane Middle School; 915 N Westview Dr. Mulvane, KS 67110
- 8:30 a.m. - Mid-afternoon
- Registration Fee- \$20- Includes educational materials and lunch
- Class is limited to 40 students

CONTACT US

Sumner County 620.326.7477
Sedgwick County 316.660.0153
Cowley County 620.221.5450

K-State Research and Extension is committed to providing equal opportunity for participation in all programs, services and activities. Program information may be available in languages other than English. Language access requests and reasonable accommodations for persons with disabilities, including alternative means for communication (e.g., Braille, large print, audio tape, and American Sign Language), may be requested by contacting the event contact Jeff Seiler four weeks prior to the start of the event (May 1, 2025) at 620-326-7477/316-660-0153/620-221-5450 or jseiler4@ksu.edu. Requests received after this date will be honored when it is feasible to do so. Language access services, such as interpretation or translation of vital information will be provided free of charge to limited English proficient individuals upon request.

Kansas State University Agricultural Experiment Station and Cooperative Extension Service

K-State Research and Extension is an equal opportunity provider and employer.



Tuesday, May 20, 2025
Wheat Variety Plot Tour
Sedgwick County



K-State Research and Extension is committed to providing equal opportunity for participation in all programs, services and activities. Program information may be available in languages other than English. Reasonable accommodations for persons with disabilities, including alternative means for communication may be requested by contacting the event contact, Sedgwick, four weeks prior to the start of the event, April 22, at 316-660-0153 or jseiler4@ksu.edu. Requests received after this date will be honored when it is feasible to do so. Language access services, such as interpretation or translation of vital information will be provided free of charge to limited English proficient individuals upon request. Kansas State University Agricultural Experiment Station and Cooperative Extension Service. K-State Research and Extension is an equal opportunity provider and employer.

Andale Plot - Neville

8:00 AM

1/2 mile south of
intersection 247th St W &
21st St N

(GPS: [37.714590](#),
[-97.624487](#))

Coffee and Donuts

Haysville Plot

10:45 AM

John C. Pair Center
1901 E 95th St S,
Haysville, KS 67060

Lunch Provided

A tour of the Pair Center will
be offered after the meal

Speakers

K-State Wheat Specialists

Contact Jeff Seiler: 316-660-0153
jseiler4@ksu.edu

Community Vitality

Grant Writing Basics

The Grant Writing Basics course is suitable for people who have never written a grant (more than 50% of our students), and those who have a lot of experience and want to take a fresh look at their current practices.



More than 3,400 Kansans have been trained and found confidence and writing skills, resulting in more than \$100 million of successful grants written in the first 18 months after they took this class. They wrote grants to support park improvements, walking trails, building restoration, leadership programs, arts, programming, festivals, and other community infrastructure.

[Read More](#)

EFNEP-SnapEd

WE'RE HIRING!

Learn more at:
www.ksre.k-state.edu/about/careers

K-STATE
Research and Extension

Kansas State University is an equal opportunity employer.
A criminal background check is required.

SNAP-Ed Nutrition Educator

Support Kansans in leading healthy lives & improving food security.

🕒 Full-time 📍 Wichita, KS 💰 \$16.50-20.50/hour

🔍 K-State Careers #519689



Nutrition Educator, SNAP-Ed opportunity in Sedgwick County. Office in WICHITA, KS. See ksre.k-state.edu/about/careers for more information. Screening begins immediately. K-State Research and Extension is an EOE of individuals with disabilities and protected veterans. Background check required.

4-H and Youth Development

4-H Summer Enrichment Program



Sedgwick County Extension is excited to announce the 2025 4-H Summer Enrichment Program, offering a dynamic lineup of educational opportunities for local youth. This free program, supported by K-State Research and Extension, allows

young learners to explore areas such as environmental education, STEAM, agriculture, and hands-on learning. Classes include fun, research-based activities like "Backyard Birds" for young ornithologists, "Thank You Farms" exploring agricultural life, and "Coding with Steve," where students learn screenless coding using Indi robots. Designed for ages 5 to 18, sessions are facilitated by Extension staff and volunteers throughout June and late July.

In addition to the classes, several kits are available, such as the "Embryology Kit," which gives students a chance to hatch chicks, and the "Mindful Me Kit," promoting mental health through mindfulness and yoga activities. Most classes and kits are free, with minor fees for consumable materials or refundable deposits. Educators and parents are encouraged to register early as spots fill quickly. For more information or to sign up, visit www.tinyurl.com/school-enrichment or contact the Sedgwick County Extension office.

K-State News

Connecting Entrepreneurial Communities Conference Focuses on Entrepreneurship in Rural Kansas



A first-in-Kansas conference dedicated to supporting rural entrepreneurship will bring together people from across the state this summer.

The [Connecting Entrepreneurial Communities conference](#) promotes

small communities and highlights people, businesses and best practices for creating an entrepreneurial mindset.

All Kansans are invited to attend the conference, which will occur from **June 25-27 in Kingman.**

[Learn more about the conference, view the schedule and register to attend.](#)

The conference is a collaborative project that involves multiple partners across the state: Kansas State University, [K-State Research and Extension](#); [Network Kansas](#); the [Kansas Department of Commerce Quality Places Division](#), including the [Office of Rural Prosperity](#) and [Kansas Main Street](#); and [Thrive Kansas](#).

Get Involved!



K-State Research and Extension — Sedgwick County exists to serve the people of south central Kansas. Our mission thrives because of community support. We offer many opportunities for volunteers to offer their time and skills, from gardening to youth development to programming support.

[Learn more about ways to support our programming and the needs of the community.](#)

Looking for an event space?



**Consider having your next event at the
Extension Education Center!**

[Read more](#)



Please help support Extension community services in
Sedgwick County through the
Extension Education Foundation, Inc.

When you shop Dillons Food Stores, Dillons will make a
donation to the Extension Education Foundation, Inc.

1. Go to Dillons.com/communityrewards
2. Log into your Dillons account
3. Search for NPO number **CY612**
4. Click enroll



[Mail-in donation form](#)

Kansas State University Agricultural Experiment Station and Cooperative Extension Service

K-State Research and Extension is an equal opportunity provider and employer.

K-State Research and Extension - Sedgwick County

This monthly e-newsletter is intended to inform citizens of events, activities and research-based information from K-State Research and Extension Center -

Sedgwick County
7001 W. 21st St. N., Wichita, Kansas 67205

K-State Research and Extension is an equal opportunity provider and employer. K-State Research and Extension is committed to making its services, activities, and programs accessible to all participants. If you have special requirements due to a physical, vision or hearing disability, please contact:
Dr. Brantley, PhD, Extension Director, Sedgwick County 316-660-0105

K State Research and Extension is a short name for the Kansas State University Agricultural Experiment Station and Cooperative Extension Service, a program designed to generate and distribute useful knowledge for the well being of Kansans. Supported by county, state, federal and private funds, the program has county extension offices, experiment fields, area extension offices and regional research centers statewide. Its headquarters is on the K State campus in Manhattan. For more information, visit www.ksre.ksu.edu



Share This Email



Share This Email



Share This Email



*Sedgwick County...
working for you*

K-STATE
Research and Extension

Sedgwick County

Sedgwick County Extension | 7001 W 21st St N | Wichita, KS 67205-1759 US

[Unsubscribe](#) | [Update Profile](#) | [Constant Contact Data Notice](#)



Try email marketing for free today!