



**K-STATE**  
Research and Extension

Sedgwick County

# 4-H UPDATE

[www.sedgwick.ksu.edu](http://www.sedgwick.ksu.edu)

## *In this Issue*

<b>Page 1</b> Calendar	<b>Page 7</b> Interior Design Project Info
<b>Page 2</b> From the Desk of...	<b>Page 8</b> Livestock Information
<b>Page 3</b> Meet Lori.....	<b>Page 9</b> Teen Council Minutes
<b>Page 4</b> YQCA	<b>Page 10</b> Formal Dinner
<b>Page 5</b> Important Information	<b>Page 11 - 12</b> School Enrichment Info
<b>Page 6</b> Project Announcements	<b>Page 13</b> K-State Junior Producer Days

## UPCOMING EVENTS

<b>February 21</b>	<b>Deadline to enroll in Shotgun and Archery</b>
<b>March 1</b>	<b>Deadline for State Scholarship applications (see page 5)</b> <b>Deadline for Formal Dinner reservations (see page 10)</b>
<b>March 8</b>	<b>Formal Dinner</b>
<b>March 11</b>	<b>YQCA Training (see page 8)</b>
<b>March 12</b>	<b>Interior Design zoom meeting (see page 7)</b>
<b>March 15</b>	<b>Deadline for County Scholarship Applications (see page 5)</b>
<b>March 22</b>	<b>Beef Weigh-In 9-11 am, Heartland Vet (Tagging will take place)</b>
<b>April 26</b>	<b>Spring Livestock Show - Goats 8:30 - 10 a.m. (Tagging will take place)</b> <b>Sheep 10-12 a.m. (Tagging will take place)</b>
<b>April 27</b>	<b>Spring Livestock Show - Swine 10-12 a.m. (Tagging will take place)</b>





## *From the Desk of..... Stephanie Hays*



Dear 4-H Families,

Where has the month of January gone?

Time is flying by, and I can hardly believe I get to do this incredible job every single day! January was a whirlwind of activity,

filled with Leaders' Meetings, the PDC Meeting, the Advisory Council Meeting, New Agent Training, and the 4-H Program Rally—where I had the chance to learn about the exciting new Interior Design project guidelines. I also had the pleasure of visiting the Goddard 4-H Club to talk about parliamentary procedure and Robert's Rules of Order. We even put our skills to the test by making **Parliamentary Chex Mix**—a fun and interactive way to learn!

February is already off to a strong start! We've successfully wrapped up 4-H Days and are diving into Fair Board meetings, Livestock Committee meetings, additional New Agent training sessions, a grant writing workshop in Topeka, and Teen Council. I'm especially looking forward to **Citizenship in Action on February 16-17**, where we will explore leadership development and civic engagement.

As we continue through the month, I encourage all of you to stay focused on your project goals and **document everything** in your record books—it's never too early to start tracking your hard work and progress!

Keep up the great work, and I can't wait to see all the amazing things you accomplish!

Steph 😊

# SEDGWICK COUNTY 4-H

## WELCOMES LORI HOLT

Dear 4-H Families:

I am excited to formally introduce myself as the new 4-H Program Manager for Sedgwick County Extension 4-H. My name is Lori Holt, and I come to you after recently retiring from 36 years of teaching special education across K-12 grade levels.

Outside of education, I have a passion for drawing, painting, sewing, quilting, crafting and spending time by the water soaking up some sun. I am truly looking forward to this new role, which will allow me to share my love of teaching and work alongside our youth. I'm excited to contribute to the growth of Sedgwick County's school enrichment programs and support the amazing 4-H program.

I can't wait to meet you all and work together to create impactful experiences for our youth!

Sincerely,  
Lori Holt  
4-H Program Manager  
Sedgwick County  
Phone: 316.660-0111  
Email: llholt@ksu.edu





**All Livestock 4-H and FFA members have to participate in a YQCA program before being allowed to show at 4-H events this year.**

Instructor-Led classes are scheduled at the Extension office (7001 W 21st St N Wichita, KS 67205) at 7:00 PM on **March 11th**.

**You only need to attend one class.** The cost for the instructor-led class is \$3.00.

On-Line classes can be found at <https://yqcaprogram.org/> and the cost is \$12.00. If you take an online class, please print your certificate. You can either email it to me or bring it to the office.

You need to set up an account for the Instructor-Led or On-Line class. Help tools at <https://www.youtube.com/watch?v=wZHW2qtMI0c> will help with enrolment for your YQCA account and course.

The Goals of YQCA are to:

- Ensure safety and well-being of animals produced by youth for showing and for 4-H and FFA projects.
- Ensure a safe food supply to consumers.
- Enhance the future of livestock industry by educating our youth on these very important issues so they can become more informed producers, consumers and/or employees in the agriculture and food industry
- Maximize the limited development time and budgets of state and national youth program leaders to provide an effective quality assurance program.
- Offer livestock shows a valid, national quality assurance certification for youth exhibitors.
- The Youth for the Quality Care of Animals national multi-species quality assurance program embraces human diversity and is committed to ensuring that its educational programs are available to youth and adults on a nondiscriminatory basis without regard to age, ancestry, color, disability, gender identity or expression, genetic information, HIV/AIDS status, military status, national origin, race, religion, sex, sexual orientation, or veteran status. This statement is in accordance with U.S. civil rights laws and the U.S. Department of Agriculture.

# Important Information!

## Summer Camp Registration is Open for 2025 Season

Families and youth eager to experience the excitement of 4-H camp at Rock Springs Ranch can secure their spots for the upcoming summer sessions. This includes mini camp, half week and full week sessions, teen leadership and several new specialty camps. For more information: <https://ksre.k-state.edu/tuesday/announcement/?id=101198>

\*\*\*\*\*

## State 4-H Scholarships and the Vanier Family Scholarship Changes

The Kansas 4-H Scholarship and Vanier Family Scholarship application process is now open. Applications are due by March 1, 2024, at 11:59 PM.

To learn more about the scholarship process use the following link or click here <https://kansas4h.org/resources/awards-and-recognition/scholarships.html>

Scholarships are available to current high school seniors and undergraduate students. There are several scholarships that graduate and professional students are eligible for. Please encourage all these individuals to apply for one of the Kansas 4-H Scholarships. Questions can be directed to Sarah Keatley, 620.366.0035 or [keatley@ksu.edu](mailto:keatley@ksu.edu)

\*\*\*\*\*

## Post High School Sedgwick County Scholarships

The following county scholarships are available to qualified Sedgwick County 4-H members for further education at a community college, 4 year institution, technical school in or out of state.

**The Sedgwick County 4-H Scholarship application form can be used for the following scholarships, Teen Council, and 4-H Advisory. All applications are due March 15.**

<https://kansas4h.org/resources/awards-and-recognition/scholarships.html>

**Livestock Scholarship application is now live at**

<https://form.jotform.com/240137898944066>

**Applicant must be a current member of a 4-H club or FFA chapter located in Sedgwick County. Applicant must be a high school senior graduating in the spring of 2025.**

**Applications must be submitted to the Sedgwick County Youth Livestock Foundation by March 15, 2025. For further information please review the application and if you have questions please email [sedgyouthlivestock@gmail.com](mailto:sedgyouthlivestock@gmail.com).**

\*\*\*\*\*

**YQCA Scholarship available to high school seniors to age 21, pursuing an agriculture degree or trade. Scholarship applications are open from January 1st -February 17th. Recipients will be announced in May. More information posted on YQCA website:**

<https://yqcaprogram.org/>



## ***Geology Announcement from Crista Burnett***

Hello 4-H Geology Members,

I have scheduled Geology meetings for the first Wed. of Feb, March and April in the Sunflower Room. That room for May was already booked, so we will have an ID help session in the smaller Sedgwick Room. I will try to schedule us a Spring field trip once we get to warmer weather. An important part of 4-H is public speaking, so I encourage those in the project to volunteer to present a geology related topic at one of our meetings. The focus February is rocks, March is minerals and April will be fossils. Please let me know if your 4-Her wants to volunteer to present at a meeting and what they will be presenting. We also typically have presentations on the types of projects that can be entered in the fair and the specific requirements, if that would be of interest to your 4-Her.

I am looking forward to our first meeting Wednesday, Feb. 5th @ 7:00 in the Sunflower Room, which will focus on the Rock Cycle!

Our itinerary will be as follows:

1. Roll Call - 4-Hers should think about the type of rock they would like to be and what that rock is used for. For example: I would be marble, because I could be a statue. See the 4-H geology website (below) for ideas. 4-Her's will be asked to stand and complete the following:

Hello my name is \_\_\_\_\_. If I were a ROCK, I would be \_\_\_\_\_  
because\_\_\_\_\_.

2. Knox will present an overview of Kansas Geology
3. Genna will present the types of Geology Exhibits that can be entered in the county/state fair
4. Zoe will present the Rock Cycle.
5. Brendan will give a more detailed talk on the Sedimentary, Metamorphic, and Igneous Rocks.
6. Rock ID Game (time permitting)
7. Clean-up--After the meeting I will need some help pushing in chairs and cleaning the tables and floor if needed.

Please forward this to anyone I may have missed, or any 4-Her interested in the project that would like to attend as a guest. See you Feb.5th! Crista Burnett 519-9702

<https://kansasgeology.weebly.com/>

## ***Shooting Sports Announcement from Susie Klausmeyer***

The shotgun and archery program are taking registrations for the 2025 shooting season. For more information on archery, please go to <https://bit.ly/4-Harchery> and the shotgun program, please go to <https://bit.ly/4-HShotgun>. To sign up for either program, please fill out this form: <https://forms.gle/Pg8Z1dx5MW5u65Lu8> before February 21. This must be completed as well as enrolling in 4-H online. For more information on any of the shooting sports programs, visit our website:

<https://sites.google.com/view/sedgwickco4-hshootingsports>

# Interior Design Project Changes

To all 4-H members enrolled in the Interior Design & Architecture project announcing changes to state fair classes and invitations to scheduled zoom meetings/virtual project meetings.

This year, a complete revision to the Interior Design & Architecture section in the State Fair Book. We have been working with faculty members in the Interior Architecture Department the past several months to create new project materials and state fair classes that better align with design thought processes and learning activities.

During the upcoming virtual project meetings for 4-H project members, we will discuss changes to the state fair classes and Interior Architecture faculty will be on hand to talk to the youth about how to get started.

We will be hosting an upcoming zoom meeting on Feb. 6 at 10:00 am for extension agents & support staff and virtual project meetings for 4-H youth and parents on Feb. 12 and Mar. 12, both at 7:00 pm. If someone cannot join in person, the meetings will all be recorded for viewing at a later date.

## **Virtual Project Meetings for 4-H Youth & Parents:**

Wednesday, February 12, 2025 at 7:00 pm – 4-H Project Members & parents; Amy Collins, State 4-H Office and Interior Architecture faculty members will also join the call to answer questions and get youth started on projects.

**Zoom Link:** <https://ksu.zoom.us/j/92487680063>

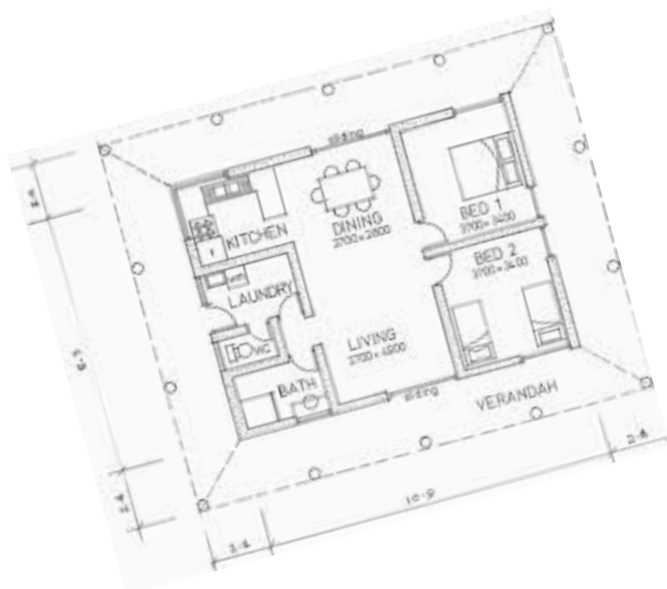
Wednesday, March 12, 2025 at 7:00 pm – 4-H Project Members & parents; Amy Collins, State 4-H Office and Interior Architecture faculty members will also join the call to answer questions and get youth started on projects.

**Zoom Link:** <https://ksu.zoom.us/j/98394057717>

## **In person project experiences:**

Saturday, April 12, 2025 – All 4-H Interior Design & Architecture project members are invited to the K-State Open House; Interior Architecture Dept. in Seaton Hall. K-State students and faculty will be available to help 4-H members get started with the construction of a marble maze.

June – Discovery Days Class with Interior Architecture Dept. – hands on learning experience.



## **Livestock Events:**

### **County:**

**Beef Weigh-in and Tagging - March 22, 9-11 a.m., Heartland Vet**

**Spring Livestock Show - April 26, Cheney Fairgrounds, Goats 8:30 - 10 a.m. (Tagging will take place at this time.**

**April 27, Cheney Fairgrounds, Swine - 10-12 a.m. (Tagging will take place at this time.**

### **State:**

- K-State Junior Swine Producer Day
- Date: March 1, 2025
- Location: Stanley Stout Center, Manhattan, KS
- Description: A one-day educational event focusing on the selection and management of youth swine projects.
- K-State Junior Meat Goat Producer Day
- Date: March 22, 2025
- Location: Stanley Stout Center, Manhattan, KS
- Description: A one-day educational event focusing on the selection and management of youth meat goat projects.
- K-State Invitational Meat Judging Contest
- Date: April 5, 2025
- Location: Kansas State University, Manhattan, KS
- Description: An educational opportunity for youth to enhance their meat judging skills.

## **Horse Events:**

- Kansas 4-H Horse Panorama
- Date: February 22-23, 2025
- Location: Rock Springs Ranch, Junction City, KS
- Description: A compilation of contests related to the Horse Project, including quiz bowl, hippology, public speaking presentations, photography, and educational posters.
- Kansas State 4-H Horse Judging Contest
- Date: March 21, 2025
- Location: Equifest of Kansas, Saline County Expo Center, Salina, KS
- Description: An educational experience for participants to demonstrate their knowledge of equine-related subject matter, including structure and movement.

**For more details and updates, please visit <https://www.equifestofks.com/>**

**Complete 4-H division information and rules are available at <https://www.kansas4-h.org/events-activities/contests/horse-judging/index.html>**



# TEEN COUNCIL ACTIVITIES



**Sedgwick County  
4-H invites you to**

.....  
**JOIN THE 4-H  
TEEN COUNCIL**

*Meeting Times  
4th Monday night of every  
month  
7:00 p.m.  
Extension Office*

**Open to any Sedgwick County 4-H Youth ages 13 and over.**

**Sedgwick County 4-H Teen Council provides an opportunity to work within your community with younger 4-Hers, participate in community service projects, get to know 4-H Teens from other county clubs and participate in leadership conferences and workshops.**

From Reporter Knox Crouch.....

The January meeting of the Sedgwick County 4-H Teen Council was called to order at 7:00 PM on Monday, January 27th, by Vice President Aria Ballman at the Sedgwick County Extension Office.

After the flag salutes and roll call, the previously established Recreation, Social, and Formal Committees gathered to share updates and plan their upcoming projects. The Formal Dinner Committee decided to set ticket prices at \$40 per ticket and began organizing plans to hire a dance instructor.

Following the officers' reports, new business was introduced, and three newly formed committees—the Fundraising Committee, Awards Ceremony Committee, and Concessions Committee—met for the first time. These committees convened briefly to outline their roles and begin planning. The Fundraising Committee is actively exploring new opportunities to support council activities.

The group also discussed upcoming service projects, followed by some brief announcements. The meeting was then adjourned.

After adjournment, Katrina Turner delivered a presentation on college planning and shared exciting updates from K-State, providing valuable insights for the 4-H members.

For more information contact  
Stephanie Hays 316-660-0112  
sahays@ksu.edu  
Sedgwick County Extension Office

All 4-H youth 13-18 are invited to attend the 4-H Formal Dinner to be held at 6:00 p.m. on March 8, 2025. The dinner followed by a dance will be held at the Holiday Inn Wichita East I-35, an IHG Hotel 549 S Rock Rd, Wichita, KS. The evening will consist of learning about formal etiquette and also feature a presentation by Jaryth Barten. Members are also allowed to invite a guest. The theme for the evening will be "Under the Sea". Cost of the tickets will be \$40 per person. Deadline to purchase tickets is March 1, 2025. Contact Stephanie Hays at 660-0112 if you have questions. This is her current office number.

Click on the link to purchase your tickets:

<https://lp.constantcontactpages.com/ev/reg/npfquy5/lp/6d951f57-3ee9-4777-98de-02718565cfc7>

PLEASE JOIN US  
**MARCH 8, 2025**

# 4-H Teen Council Formal Dinner

ALL YOUTH AGES 13-18 ARE INVITED TO JOIN  
SEDGWICK COUNTY 4-H TEENS AT 6:00PM  
MARCH 8, 2025 FOR A FORMAL DINING  
EXPERIENCE FOLLOWED BY A DANCE!  
FOLLOW THE LINK BELOW OR SCAN THE  
QR CODE TO PURCHASE TICKETS!



**RSVP**  
[BIT.LY/FORMALDINNER2025](https://bit.ly/FormalDinner2025)

**K-STATE**  
Research and Extension



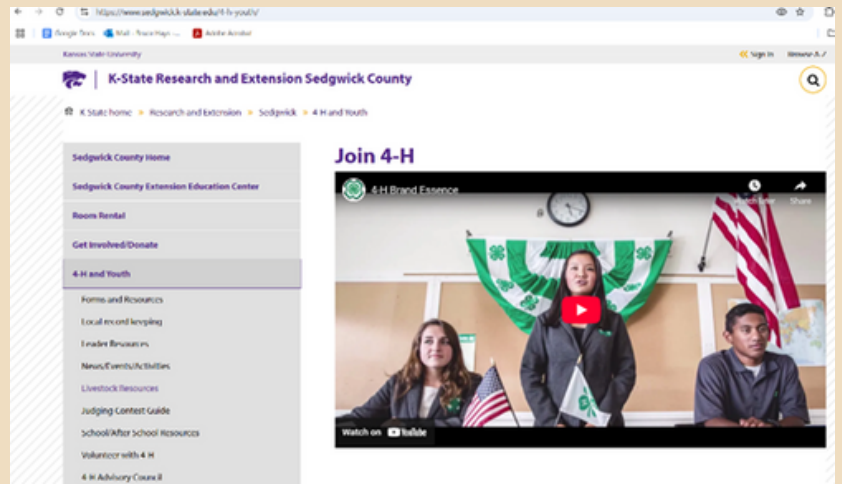
Sedgwick  
County

K-State Research and Extension is committed to providing equal opportunity for participation in all programs, services and activities. Program information may be available in languages other than English. Reasonable accommodations for persons with disabilities, including alternative means for communication (e.g., Braille, large print, audio tape, and American Sign Language) may be requested by contacting the event contact Stephanie Hays two weeks prior to the start of the event February 22 at 316-660-0111 or [sahays@ksu.edu](mailto:sahays@ksu.edu). Requests received after this date will be honored when it is feasible to do so. Language access services, such as interpretation or translation of vital information will be provided free of charge to limited English proficient individuals upon request.

**Kansas State University Agricultural Experiment Station and Cooperative Extension Service**

For any questions related to 4-H Youth Development in Sedgwick County, be sure to visit the [Sedgwick County Extension 4-H Youth Development](https://www.sedgwick.kstate.edu/4-h/youth/)

site. It offers valuable resources, program information, and answers to all your inquiries. You can find everything you need at this site. Whether you're new to 4-H or looking for updates, this is your go-to destination for all things related to youth programs and development!



# Order Butterflies!

Teachers, Homeschool educators, and Parents:  
Bring the wonder of nature to your classroom or home  
with our Life Cycle Miracle Program!

Experience the magic of metamorphosis as Painted Lady  
caterpillars—native to Kansas—transform into  
butterflies. A perfect hands-on way to teach about the  
incredible life cycle of these fascinating creatures!

Order now to inspire curiosity and learning!

*[Click here to learn  
more and order!](#)*

Deadline to order is March 6, 2025

Brought to you by the Sedgwick County 4-H School Enrichment Program



Questions?  
Contact Cathy Jones at  
316-660-0113  
cpjones@ksu.edu





# EXPLORE

## 4-H School Enrichment



### Coding with Steve

Our indi robots (dubbed "Steve" and friends) teach students how to use sequential thinking, math, and strategy to accomplish tasks. If you're interested in bringing Steve to your child's classroom, send their teacher to our website to learn more!



### Plants and Science

We have multiple classes brought to you by our Master Gardener volunteers as well as our Life Cycle Miracle and Wheat Science classes. Order your butterfly larvae before March and check out our other Earth Science based classes while on our website!



### Mindful Me

Being mindful about our emotions and how to regulate them is difficult. The mindfulness muscle is something that must be exercised. Learn how to do this through our seven session Mindful Me class or free rentable curriculum kit!



**CONTACT US**

**316-660-0115**

[www.tinyurl.com/school-enrichment](http://www.tinyurl.com/school-enrichment)



# Save the Date!

## 2025 K-State Junior Producer Days



**K-STATE**  
Research and Extension



*Swine - March 1*



*Goat - March 22*







# **K-STATE**

## **Research and Extension**

### **Stephanie Hays**

#### **4-H Agent**

Sedgwick County Extension  
7001 W. 21st St. N.  
Wichita, KS 67205  
Phone: (316) 660-0112  
Email: sahays@ksu.edu

### **Lori Holt**

#### **4-H Program Manager**

Sedgwick County Extension  
7001 W. 21st St. N.  
Wichita, KS 67205  
Phone: (316) 660-0111  
Email: 11holt@ksu.edu

### **Sophia Zurschmiede**

#### **4-H Program Assistant**

Sedgwick County Extension  
7001 W. 21st St. N.  
Wichita, KS 67205  
Phone: (316) 660-0112  
Email: esz@ksu.edu

### **Cathy Jones**

#### **4-H Program Assistant**

Sedgwick County Extension  
7001 W. 21st St. N.  
Wichita, KS 67205  
Phone: (316) 660-0113  
Email: cpjones@ksu.edu

### **Barbara Wingfield**

#### **Office Professional**

Sedgwick County Extension  
7001 W. 21st St. N.  
Wichita, KS 67205  
Phone: (316) 660-0115  
Email: bwingfie@ksu.edu