



K-STATE
Research and Extension

Sedgwick County

4-H UPDATE

www.sedgwick.ksu.edu

In this Issue

Page 1	Calendar	Page 10	Dog Project Judges and Leader Training
Page 2	From the Desk of...	Page 11	Livestock Info
Page 3-4	Why Join 4-H	Page 12	Beef and Sheep Producer Days
Page 5	4-H Day	Page 13	Horse Project Event Info
Page 6	Teen Council News	Page 14	Scholarships
Page 7-8	YQCA	Page 15	More UpComing Events and Calendar
Page 9	Horse Judging Contest Info		

UPCOMING EVENTS

December 25-January 1	Office Closed
January 5, 2026	Kansas 4-H Scholarship Applications Due and Vanier Scholarship
January 8, 2026	YQCA training, 7:00 pm, Extension Office
January 9, 2026	Record Books back to the office for those going on to Regionals
January 23, 2026	4-H Day Entries Due
January 23, 2026	Horse Judging Contest
January 31 - February 1, 2026	4-H Dog Judges and Leadership Training, Salina
February 7, 2026	4-H Day, Stone Creek Elementary, Derby
March 15, 2026	County Scholarship Applications Due to office

KANSAS STATE
UNIVERSITY

Extension



From the Desk of..... Stephanie Hays

Dear 4-H Families:

As we begin the 2026 4-H year, I want to take a moment to celebrate the heart of our program - our incredible youth, our dedicated volunteers, and the families who support them every step of the way. The time, talent, and care you pour into this program are what make Sedgwick County 4-H such a vibrant, welcoming, and empowering community for young people to grow, lead, and thrive.



I am continually inspired by the passion I see in our clubs: the leaders who mentor with patience and enthusiasm, the parents who jump in wherever needed, and the youth who show up eager to learn, try new things, and make an impact. Thank you for making 4-H more than just a program, you make it family.

Looking ahead, the 2026 4-H year is filled with possibility. From project enrollment and workshops to leadership conferences, community services, and county fair, there are so many opportunities for youth to discover their interests, build confidence, and connect with others who share their passions. We are excited to roll out new educational experiences, hands-on activities, and spaces where youth voices are heard and celebrated.

Whether you're just starting your 4-H journey or returning to continue building your skills, I hope this year challenges you, excites you, and reminds you of the tremendous potential you carry. We can't wait to see what you achieve!

Let's make 2026 a year filled with learning, leadership, laughter, and lifelong memories.

Thank you for being part of the Sedgwick County 4-H family. Here's to a fantastic year ahead!

Stephanie Hays, Extension 4-H Agent
Sedgwick County
316.660.0112
sahays@ksu.edu



Joining 4-H

Help Us Grow 4-H in Your Community!

Please consider sharing the many benefits of 4-H with families in your area. 4-H provides youth with hands-on learning experiences, leadership opportunities, and a positive, supportive environment to explore their interests and develop lifelong skills.

Below are key benefits you can highlight when encouraging others to join 4-H:

Why Join 4-H?

The Benefits & Opportunities in Sedgwick County

4-H is one of the most impactful youth programs in Kansas and right here in Sedgwick County, youth and adults can take part in a huge variety of hands-on learning experiences, leadership opportunities, and community events. Whether a young person wants to try something new, build confidence, or develop lifelong skills, 4-H has something for everyone.

The Benefits of 4-H

4-H helps youth grow in four key areas:

Head – Problem-solving, decision-making, goal setting

Heart – Communication, teamwork, leadership

Hands – Responsibility, service, practical life skills

Health – Well-being, confidence, resilience

Research shows that 4-H members build strong leadership abilities, learn to work with others, and develop important life skills they use in school, careers, and the community. Families also gain a strong sense of belonging through club culture, mentoring relationships, and shared experiences.

What Youth Can Do in Sedgwick County 4-H

Our local program offers a full year of activities, events, and project experiences, including:

Community Clubs

Sedgwick County has 15 active 4-H clubs, each offering monthly meetings, leadership roles, service projects, and educational opportunities. Youth can visit different clubs to find the one that feels right for them.

Projects for Every Interest

Youth choose from nearly 50 project areas — from livestock, photography, cooking, and gardening to robotics, rocketry, arts, leadership, and more. Projects are hands-on, fun, and designed to build real skills.



Countywide Events

Youth can take part in events throughout the year, including:

- **4-H Carnival** – A fun fall event with games and club activities
- **4-H Day** – Public speaking, demonstrations, and creative arts
- **4-H Camp** – A multi-day summer adventure for grades 3–7
- **Workshops, clinics, project meetings, and service events**
- **State & National Opportunities** – Leadership conferences, Discovery Days, competitions, and even National 4-H Congress

Sedgwick County Fair

One of the biggest highlights of the year!

Youth showcase their hard work through exhibits, livestock shows, demonstrations, and displays. The fair is a chance to celebrate accomplishments, learn from judges, and connect with the community.

Awards & Scholarships

Sedgwick County 4-H members are eligible for:

- Annual county awards
- Recognition opportunities
- Local and state scholarships for college, technical school, and leadership programs

Opportunities for Adults

4-H isn't just for youth — adults play an essential role and can participate in many ways:

- Club leaders and project volunteers
- Event helpers, judges, and mentors
- Workshop presenters
- Chaperones and support volunteers
- Advisory, committee, and leadership roles

Adults gain leadership experience, training opportunities, and the chance to make a meaningful impact on local youth.

How to Join

Joining 4-H is simple:

Youth ages 7–18 (before Jan 1) can join 4-H.

1. Contact (316)660-0115 to find out where a club in your area is.
2. Visit a few clubs to find the best fit for your family.
3. Enroll online through <https://4honline.com>
4. Choose your projects.
5. Start participating in meetings, service projects, and events!

Cloverbuds (ages 5–7) may join special age-appropriate activities.

Why It Matters

By joining Sedgwick County 4-H, young people gain lifelong friendships, real-world skills, leadership experience, and the confidence to succeed. Adults gain a welcoming community and meaningful volunteer opportunities. We can wait to see you in 4-H.



4-H Day

FEBRUARY 7, 2026



JOIN THE FUN!

Give a Demonstration or
Illustrated Talk
Reading
Piano Solo/Instrumental Solo
Public Speaking
Model Meeting
Skit/Dance

Upcoming Event

4-H Day
February 7, 2026

Where:

Stone Creek Elementary
3012 Triple Creek Dr.
Derby, KS 67037

We hope you will
participate!

Groups:

<https://tinyurl.com/4c4petzr>

Junior Entries:

<https://tinyurl.com/ykfwv2ek>

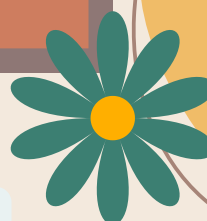
Intermediate Entries:

<https://tinyurl.com/bdncvffm>

Senior Entries:

<https://tinyurl.com/ye2ybr4p>

For more information:
4-H Office (316) 660-115



TEEN COUNCIL ACTIVITIES

For more information contact:

Lori Holt

316-660-0111

llholt@ksu.edu

Sedgwick County Extension Office



**Sedgwick County
4-H invites you to**

.....
**JOIN THE 4-H
TEEN COUNCIL**

*Meeting Times
4th Monday night of every
month
7:00 p.m.
Extension Office*

Open to any Sedgwick County 4-H Youth ages 13 and over.

Sedgwick County 4-H Teen Council provides an opportunity to work within your community with younger 4-Hers, participate in community service projects, get to know 4-H Teens from other county clubs and participate in leadership conferences and workshops.

4-H Teen council is a leadership organization for youth ages 13-18. Members are involved in several leadership activities such as organizing Formal Dinner and helping with Style Revue. Teens also participate in community service projects, such as delivering positive notes/cards to the seniors at a local senior living facility. The club meets on the fourth Monday of every month at 7:00 p.m. at the extension office in the Meadowlark Room. Our next meeting will be on the 22nd of December. The teens will be having a gift exchange, \$15 max, and watching a Christmas movie. Bring your favorite snack too! The snacks will be shared with the group. See you on the 22nd.

Jurney Yung and Lori Holt, Sponsors





YQCA CERTIFICATE IS MANDATORY FOR SEDGWICK COUNTY YOUTH TO SHOW AT SEDGWICK COUNTY FAIR

Youth for the Quality Care of Animals (YQCA) is a national multi-species quality assurance program for youth ages 8 to 21. The program is designed to provide a minimum 60 minutes of education each year.

YQCA is the result of a collaborative effort between states that have previously offered multi-species youth livestock quality assurance programs, the National Pork Board's Youth PQA Plus program and representatives from other national livestock groups.

- **Food Safety**

YQCA is designed as an annual education and certification program focused on food safety, animal well-being and character awareness for youth ages 8 to 21 producing and/or showing pigs, beef cattle, dairy cattle, sheep, goats, rabbits, and poultry.

- **Animal Well Being**

The program has been designed by extension specialists and national livestock program managers to ensure it is accurate, current and relevant to the needs of the animal industry and shows and is appropriate for youth.

- **Character Development**

YQCA is accepted at a number of shows across the United States.

I am offering 5 teacher led courses for any individual who would like to participate in person. Dates below to sign up go to this link. <https://yqcaprogram.org/> choose your age group and instructor led.\$3.00 a youth

**** Remember to enroll and take the pre-test before coming to class.**

If you want to take the Online version go the same site. <https://yqcaprogram.org> choose your age group and online version. \$12.00 a youth.

Please go to their help section for any questions for enrollment.

<https://yqcaprogram.org/local/help-desk.php>

Meeting Dates: January 8, February 12, March 12, April 9, and May 7. All meetings will begin at 7:00 pm here at the Extension Office.

Search Training



Title	Course(s)	Date	State	▼	Description	Location	Instructor
Sedgwick County YQCA January Class	Age 07: Novice	January 08, 2026 07:00 PM	KS		Please come in the office entrance by the flag pole.	Sedgwick County Extension Office 7001 W 21St St N Wichita, KS 67205	Stephanie Hays
Sedgwick County YQCA training February	Age 07: Novice	February 12, 2026 07:00 PM	KS		Come in the front Office area by the flag pole	Sedgwick County Extension Building 7001 W 21st St N Wichita, KS 67205	Stephanie Hays
Sedgwick County YQCA training-March	Age 07: Novice	March 12, 2026 01:36 PM	KS		Come in the Office entrance by the flag pole	Sedgwick County Extension Office 7001 W 21st ST N Wichita, KS 67205	Stephanie Hays
Sedgwick County YQCA training April	Age 07: Novice	April 09, 2026 07:00 PM	KS		Come in the office entrance by the flag pole	Sedgwick County Extension 7001 W 21St St N Wichita, KS 67205	Stephanie Hays
Sedgwick County YQCA taining May	Age 07: Novice	May 07, 2026 07:00 PM	KS		Come in the front office entrance by the flag pole	Sedgwick County extension office 7001 W 21st ST N	Stephanie Hays



Horse judging Contest

The 4-H Horse Judging Contest provides youth an opportunity to demonstrate their knowledge of equine-related subject matter, including structure and movement, in a competitive setting. This contest will provide an educational experience for all participants.

What: 2026 Kansas State 4-H Horse Judging Contest

- Cost: Early bird (by January 2, 2026)- \$25; Late (by January 9, 2026)- \$30

When: January 23, 2026

- Check-in: 7:45 a.m.
- Rules meeting: 8:15 a.m.
- Contest begins: 8:30 a.m.

Where: Equifest of Kansas; Stormont Vail Events Center; Topeka, KS

Who: The contest awards are available to all Kansas 4-H members 9-18.

- An open contest is also available through KQHA.

2026 Horse judging Contest Rules

Dog Project

We're looking for great adults and teens to take part in Kansas 4-H Dog Judges and Leaders for 4-H Dog Judge Certification and Leader Training. This two-day learning opportunity will train judges for Kansas 4-H Dog Shows, recertify current judges, and teach volunteers and teens about the judging and scoring process for Kansas 4-H Dog Shows. The certification will take place January 31-February 1, 2026 in Salina, KS at the Saline County Fairgrounds, 4-H Building.

Registration is open and information can be found at <https://www.kansas4-h.org/educational-experiences/project-based-events/trainings/dog-leader/>. Beginning in 2026, Dog Judge Training and Leader Certification will be offered every other year in even-numbered years. Judges who were certified in 2021 or 2022 should plan to recertify in 2026. Questions about certification can be emailed to klordyke@ksu.edu.



Dog Dates:

January 31-February 1, 2026: 4-H Dog Judge and Leader Training, Salina

Spring and Summer 2026: State 4-H Dog Show Qualifiers

August 2026: State 4-H Dog Show entries due, check with your local Extension Unit for local deadline

September 5, 2026: State 4-H Dog Show

Rabbit Project

If you were not able to participate in the webinar Rabbits do well in cold with a few modifications. by Kansas 4-H Rabbit project members Daphne Rider and Jonathon Wright. Here is where you can find the recording.

The recording of the 4-H Rabbit Basics and Cold Weather Webinar can be viewed on the

[4-H Animal Science Webinar page](#). Scroll down to the most recent broadcast.

Livestock Project

Good Morning Kansas Youth Livestock Families!

Attached are flyers for the 2026 K-State Junior Producer Days! They include a tentative schedule, as well as registration details. Since 2026 is an even year, we will be hosting Junior Beef Producer Day and Junior Sheep Producer Day (swine and meat goat are in odd years). Registration is now open. Both events will be hosted at the new Bilbrey Family Event Center. This is a family event! All attendees must register, which includes both youth and adults. Registration must be submitted by the appropriate deadline to receive a t-shirt.

Registration for the junior day events has transitioned to a new platform. Families will be prompted to set up a profile under a parent/guardian and then add at least one child. Once the account is created and you login to register for each day, you will have the opportunity to add children and other adults. The platform is not linear, so if you follow the prompts to the end and have multiple kids or adults to register, you will have to click on the "child" or "additional adult" tab on the left to view the options to add those individuals. Once you checkout, you will be able to view the number of kids and adults registered. A photo release and liability waiver will also be requested for each person through the platform. Families will receive a confirmation email to the address used to set up the profile after the registration is submitted.

Families who plan to attend both junior days will need to register through each unique link, separately. A confirmation email for each event will be issued once payment is processed.

The junior producer day events are one-day family educational programs to learn about the selection and management of beef and/or sheep youth livestock projects, as well as a variety of aspects related to the animal science industry. Each day is dedicated to one specie. Information to register online is included below and on the attached flyers. You may use the link or the QR Code. If you prefer to register by paper and send check or cash payment via the traditional mail, please contact me. I will provide a registration form to you. If you opt for the paper option, registrations must be received in our office by the deadline listed to receive a t-shirt. There are no refunds for the junior day events.

We will also be hosting an instructor-led YQCA certification class at the end of the day for each program. This is an opportunity for youth to complete their certification through an in-person class while they are here. You will need indicate if you plan to stay for this optional class during the registration process. Then, we will communicate more specific details on registering for the appropriate course through the YQCA website only with those who plan to stay and attend. You will need to complete an extra step to register through the YQCA platform and pay the additional \$3.00/child fee. The junior day registration is independent from the YQCA class and does not include that additional fee for the course.

If you have a child who cannot attend the producer day program, but would like to come just for the in-person YQCA certification, please email me. We will make sure you receive the information regarding the YQCA class.

Finally, there will be an option for families who are participating in junior sheep day to tour the K-State Sheep and Meat Goat Center the Friday evening before or on Saturday following that event.

K-State Junior Beef Producer Day

Date – Saturday, March 7, 2026

Registration Deadline – February 13

Cost - \$20/person by February 13 (\$30/person after February 13)

*Only those who register by February 13 will receive a t-shirt.

**Both youth and adults attending (including parents) need to register.

***No refunds.

[Flyer](#)

Online Registration - <https://bit.ly/BeefJrProducer>

K-State Junior Sheep Producer Day

Date – Saturday, April 11, 2026

Registration Deadline – March 20

Cost - \$20/person by March 20 (\$30/person after March 20)

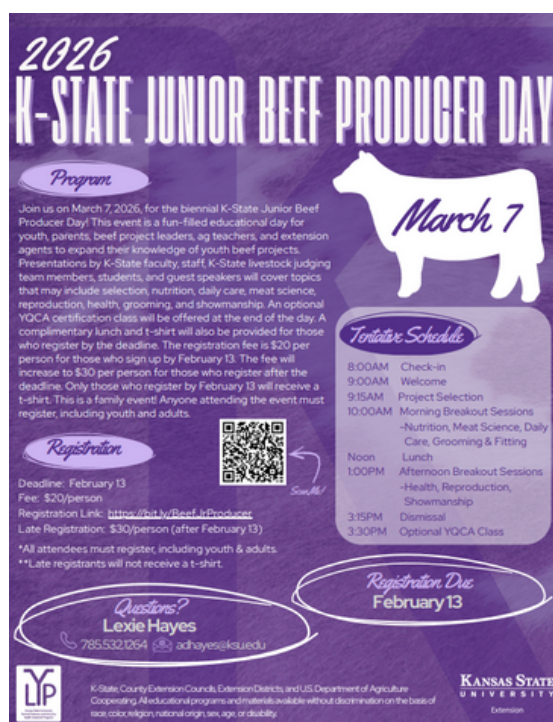
*Only those who register by March 20 will receive a t-shirt.

**Both youth and adults attending (including parents) need to register.

***No refunds.

[Flyer](#)

Online Registration - <https://bit.ly/SheepJrProducer>



2026 K-STATE JUNIOR BEEF PRODUCER DAY

Program

Join us on March 7, 2026, for the biennial K-State Junior Beef Producer Day! This event is a fun-filled educational day for youth, parents, beef project leaders, ag teachers, and extension agents to expand their knowledge of youth beef projects. Presentations by K-State faculty, staff, K-State livestock judging team members, students, and guest speakers will cover topics that may include selection, nutrition, daily care, meat science, reproduction, health, grooming, and showmanship. An optional YQCA certification class will be offered at the end of the day. A complimentary lunch and t-shirt will also be provided for those who register by the deadline. The registration fee is \$20 per person for those who sign up by February 13. The fee will increase to \$30 per person for those who register after the deadline. Only those who register by February 13 will receive a t-shirt. This is a family event! Anyone attending the event must register, including youth and adults.

Registration

Deadline: February 13
Fee: \$20/person
Registration Link: <https://bit.ly/BeefJrProducer>
Late Registration: \$30/person (after February 13)
*All attendees must register, including youth & adults.
**Late registrants will not receive a t-shirt.

Questions?
Lexie Hayes
785.532.1264 | adhayes@ksu.edu

Tentative Schedule

8:00AM Check-in
9:00AM Welcome
9:15AM Project Selection
10:00AM Morning Breakout Sessions
-Nutrition, Meat Science, Daily Care, Grooming & Fitting
Lunch
1:00PM Afternoon Breakout Sessions
-Health, Reproduction, Showmanship
3:15PM Dismissal
3:30PM Optional YQCA Class

Registration Due February 13

KANSAS STATE UNIVERSITY



2026 K-State Junior Sheep Producer Day

Date

4.11.2026
Manhattan, KS

Registration

Due: 3.20.2026
Cost: \$20/person
<https://bit.ly/SheepJrProducer>
*All adults & youth must register to attend
**Only those registered by 3/20/26 will receive a t-shirt.
***Late registration is \$30/person.

Questions

Lexie Hayes
785.532.1264
adhayes@ksu.edu

Program

Join us for the biennial K-State Junior Sheep Producer Day on Saturday, April 11, 2026. Presentations will be provided by featured guests, as well as K-State faculty, staff, and students. This event will be an educational day of activities in which youth, parents, extension agents, ag teachers, and sheep project leaders can increase their knowledge of youth sheep project selection and management. A variety of topics will be shared, including an optional YQCA certification at the end of the day. All ages and skill levels are invited! Lunch and a t-shirt are included. The registration fee is \$20/person for those who sign up by March 20 or \$30/person for those who register after that date. Only those who register by the deadline will receive a t-shirt. This is a family event! Anyone attending, including both youth and adults, must register. There will be an optional tour of the sheep and meat goat center offered on Friday evening and Saturday after jr. day.

Tentative Schedule

Friday, April 10
5:00-7:00PM Optional Tour of Sheep & Goat Center

Saturday, April 11
8:00AM Check-in
9:00AM Welcome
9:15AM Selection
10:00AM Nutrition
Morning Breakout Sessions
-facilities & equipment, reproduction, project management purchase to show
10:45AM Lunch
1:00PM Health
1:45PM Afternoon Breakout Sessions
-wool, showmanship, clipping & grooming
3:45PM Dismissal
4:00PM Optional YQCA Class
4:00-6:00PM Optional Sheep & Goat Center Tour

KANSAS STATE UNIVERSITY

Horse Project

Welcome to the Kansas 4-H Horse Project! As you begin planning for the new year, please add the following dates and events to your 4-H calendar.

January 23, 2026: [State 4-H Horse Judging Contest](#) at EquiFest of Kansas, Topeka

February 21-22, 2026: [State 4-H Horse Panorama](#), Rock Springs Ranch

June 1, 2026: Horse ID's due to the local unit (local units may have earlier deadlines, please observe whichever deadline is earlier)

August 1, 2026: State 4-H Horse Show entries due (late entries will NOT be accepted)

September 17-19, 2026: State 4-H Horse Show at the Kansas State Fair

Kansas 4-H Horse Panorama is a unique opportunity for kids who are interested in increasing their equine knowledge and testing their skills in a contest environment. Competition in Horse Bowl, Hippology, Public Speaking, Project Talks, Demonstrations and virtual contests in logo and ad design, photography, posters and PowerPoint presentations are available to youth age 9-18. A special "first-timers" event will expose youth who've never participated in Horse Bowl and Hippology to the opportunities available at Horse Panorama. First-time attendees will also have the opportunity to tour Rock Springs and visit the historic stables to meet the horses.

This year's event will be held February 22-23 at Rock Springs. The overnight format will allow for networking of 4-H Horse lovers from across the state. A volunteer panel for adult attendees and fun night at Rock Springs' Indoor activity center are also planned.

Complete registration information and rules are available at <https://www.kansas4-h.org/events-activities/conferences-events/horse/horse-panorama.html>



SCHOLARSHIPS

Sedgwick County Advisory Council Event Scholarship Application

Sedgwick County 4-H offers financial assistance to attend events. To qualify members must turn in the Sedgwick County Event Scholarship Application by 5 p.m. on or before the registration deadline. Any applications received after 5 p.m. on the registration deadline date will not be considered for a scholarship.

[Sedgwick County Advisory Council Event Scholarship Application](#)

4-H Cares Scholarship

Additional financial assistance for up to 100% of the cost available for 4-H Camp and Discovery Days.

[4-H Cares Scholarship Application](#) (sponsored by Sedgwick County 4-H Advisory Council)

APPLY NOW

Post High School Scholarships

The following county scholarships are available to qualified Sedgwick County 4-H members for further education at community college, 4-year institutions, technical school, in or out of state.

The Sedgwick County 4-H Scholarship application form can be used for the following scholarships Teen Council, and 4-H Advisory Council. Note: Each individual scholarship has additional requirements that must be included with the application form.

Due date March 15, 2026

[Sedgwick County 4-H Scholarship Application- Teen Council, 4-H Advisory](#)



Livestock Scholarship Online Application

For more information contact: [Sedgwick County Youth Livestock Foundation at sedgyouthlivestock@gmail.com](#)

State Scholarship:

Available to any Kansas 4-H post-high school member.

The scholarship process combines the State 4-H Scholarships and the Vanier Family Scholarship Program (VFSP) applications together. We hope that this encourages more applicants to pursue both of these scholarship opportunities.

Due date is January 5, 2026 Note this deadline change!!!

[Kansas 4-H Scholarship Application](#)

[Vanier Scholarship](#)



Things to look forward to in the future.....

CIA-Registration Opening up soon



What: Would you like to have more influence in laws and rules that affect your life? Then you'll want to go to Kansas 4-H Citizenship in Action! This two day event is sponsored by the State 4-H Youth Leadership Council. The purpose of the event is for Kansas youth to learn how the state legislative process works and how their voice and participation in decision-making can make a difference in their local communities. The legislative visit will not only familiarize youth with the capitol building, but will also show them how they can affect the legislative process.

When: February 15-16, 2026

Where: Topeka KS - Hotel Topeka at City Center (formerly Capitol Plaza)

Who: Youth 13-18 years old by January 1 of the current year

Please keep looking at your emails. The registration should be coming out soon. We would love to have 10-15 youth attend. We will provide transportation.

Kansas 4-H Day with the Cats

The Kansas Association of Extension 4-H Agents (KAE4-HA) is excited to inform you that the annual "4-H Day with the K-State Women's Basketball Team" has been scheduled for Saturday, March 1 at 1:00 PM. Join us as the Wildcat women take on Iowa State at Bramlage Coliseum!

For \$25.00, each attendee will receive a ticket to the game, an awesome game day t-shirt, and a \$10 meal voucher to use at the main concession stands.

A ticket/voucher option with no T-shirt is available for \$15.00.

More details and registration will come later via your local Extension Office or the K-State Research & Extension websites.

Key Details:

- **Date:** Saturday, March 1, 2026.
- **Time:** 1:00 PM.
- **Opponent:** Iowa State Cyclones.
- **Location:** Bramlage Coliseum, Manhattan, KS.
-

What to Expect:

- A fun experience for 4-H members from across the state.
- Opportunity to cheer on the Wildcats.
- Potential for a special 4-H T-shirt and meal voucher.



2026	4-H CALENDAR
January 5	Kansas 4-H Scholarship Applications Due
January 9	Record Books due back to the office
January 10-11	Kansas 4-H Youth Leadership Council Orientations Retreat, Rock Springs
January 16	SE Region 4-H Project Record Book Judging, Fredonia
January 23	State 4-H Horse Judging, Topeka
January 23	4-H Day Entries due, register online
January 30 - February 1	4-H Dog Judge and Leader Training, Salina
February 7	4-H Day, Stone Creek Elementary, Derby
February 15-16	4-H Citizenship in Action, Topeka
February 21-22	4-H Horse Panorama, Rock Springs
March 7	Junior Beef Producer Day, Bilbery Family Events Center, Manhattan. Registration Deadline TBA
March 15	County Scholarship Applications Due to office
April TBD	Shutterbug Event
April TBD	National 4-H Conference

April 11	Junior Sheep Producer Day, Saturday, April11, Bilbery Family Events Center, Manhattan. Registration deadline TBA
April 18	Spring State Shooting Sports Match, BB, Air Rifle, Air Pistol at Great Bend
April 25	Spring into Volunteering, Salina
April 28-29	Youth Entrepreneurship Contest (YEC) Manhattan
June 3-5	Discovery Days, Manhattan
June 19-20	Insect Spectacular, Yates Center
June 12-14	State 4-H Geology Field Trip (TBA)
June/July	4-H Camp Rock Springs Ranch
June 25	4-H Style Revue Judging and Public Style Revue
July 7	4-H Fair Static Judging
July 8	4-H Horse Show
July 7-11	Sedgwick County Fair
August 1	State 4-H Horse Show Entris due
August 4	4-H Wheat Expo, El Dorado

August 15	State Horticulture Judging Contest
August 22-23	4-H Livestock Sweepstakes, Manhattan (tentative)
September 5	State 4-H Dog show
September 11-20	Kansas State Fair
September 26	State 4-H Smallbore, Muzzleloading Match, Capital City Gun Club, Topeka
October 3	State 4-H Archery Match, T.H.E. Archery Range, Wakarusa
October 10-11	State Shotgun Match, Sat. - Ark Valley Range, Sun-STC
October 17-18	4-H Dog Conference
October 17	State 4-H Hunting Skills Match, Sportsman's Acres
November 21-22	Kansas Youth Leadership Forum, Rock Springs
November 21-22	Kansas Association of 4-H Volunteers Forum, Rock Springs
2027	
January 9-10	Kansas 4-H Youth Leadership Council Orientation Retreat, Rock Springs
June 9-11	Discovery Days, Manhattan



*May all that is beautiful,
meaningful and brings you joy be
yours this holiday season and
throughout the coming year!*

**FROM ALL OF US
STEPHANIE, LORI AND BARB**





K-STATE

Research and Extension

Stephanie Hays

4-H Agent

Sedgwick County Extension

7001 W. 21st St. N.

Wichita, KS 67205

Phone: (316) 660-0112

Email: sahays@ksu.edu

Lori Holt

4-H Program Manager

Sedgwick County Extension

7001 W. 21st St. N.

Wichita, KS 67205

Phone: (316) 660-0111

Email: llholt@ksu.edu

Barbara Wingfield

4-H Office Professional

Sedgwick County Extension

7001 W. 21st St. N.

Wichita, KS 67205

Phone: (316) 660-0115

Email: bwingfie@ksu.edu