



K-STATE
Research and Extension

Sedgwick County

4-H UPDATE

www.sedgwick.ksu.edu

In this Issue

Page 1	Calendar	Page 8	Ark River Cleanup
Page 2-3	From the Desk of...	Page 9	Interior Design Project
Page 4	YQCA	Page 10	4-H Youth Highlights
Page 5	Important Livestock Info	Page 11	Exciting Opportunity
Page 6	Volunteer Thank You	Page 12	4-H Council News
Page 7	Spring Into Volunteering	Page 13	4-H Calendar
		Page 14-15	2025 Spring Garden Fair

UPCOMING EVENTS

April 15	Deadline for County Scholarship Applications
April 26	Spring into Volunteering
April 26	Spring Livestock Show - Goats 8:30 a.m. - 10:00 a.m. (Tagging will take place) Sheep 10 a.m. - 12 p.m. (Tagging will take place)
April 27	Spring Livestock Show - Swine 10:00 a.m. -12:00 p.m. (Tagging will take place)
May 3	Ark River Cleanup
May 10	Warm-Up Dog Show
May 13	Fair Superintendents Meeting
May 26	Office Closed
May 30	Deadline for all livestock entries to be entered in the Fair Program





*From the Desk of.....
Stephanie Hays*



Support Our 4-H Youth at the Sedgwick County Fair!

The Sedgwick County Fair is a highlight of the year for our Sedgwick County 4-H and FFA youth, providing them with opportunities to showcase their hard work, gain valuable skills, and grow into future leaders. From livestock shows to creative exhibits, the fair is a place where dedication, learning, leadership, and community come together.

However, due to recent budget cuts, we need your help to ensure that 4-H events and project awards continue to recognize and encourage our youth. We are seeking sponsorships and donations from families, businesses, or individuals to support our project areas:

4-H and FFA Project Areas at the Fair:

✓ **Static Exhibits** – Communication, Preforming Arts, Photography, Visual Arts, Sewing and Textile Design, Shopping in Style, Family Studies, Fiber Arts, Foods and Nutrition, Health and Wellness, Interior Design and Architecture, Aerospace and Rocketry, Ag Mechanics Welding, Astronomy, Building Block Engineering, Computer Science, Electric and Renewable Energy, Robotics, Small Engines, Uncrewed Aircraft Systems, Woodworking, Civic Engagement, Leadership, Reading Adventures, Environmental Science, Geology, Shooting Sports, Wildlife, Agronomy, Entomology, Forestry, Horticulture and Landscape Design, and Veterinary Science.

✓ **Livestock Exhibits** – Beef, Swine, Sheep, Goats, Dairy Cattle, Dairy Goats, Rabbits, Poultry, and Horses.

✓ **Specialty Contests & Events** – Style Revue, Creative Tables, Food Decorating, and more that challenge youth to be creative, confident, and showcase their talents.

How You Can Help

By becoming a sponsor or donator, you can directly impact 4-H youth, rewarding their hard work and dedication. Your support ensures these experiences continue and remain meaningful for generations to come. You can help the 4-H department by connecting us with businesses that may be interested in supporting our youth through donations, whether financial contributions or in-kind gifts like awards, supplies, or sponsorships for events at the Sedgwick County Fair and beyond.

For sponsorship opportunities and information, please contact Stephanie Hays at 316-660-0112 or sahays@ksu.edu

Advocate for 4-H – Invite Your County Commissioners!

Another way to help is by reaching out to your Sedgwick County Commissioners. Let them know how important the Sedgwick County Fair and 4-H are to our youth and our community. Share how these experiences help shape future leaders through hard work, responsibility, and hands-on learning. We also invite all Sedgwick County Commissioners to attend the fair and see firsthand the incredible impact 4-H has on our youth? 4-H members or our Teen Council would love to give them a personal tour of the fair, introduce them to exhibitors, and show them the lifelong skills being developed through 4-H. Find your Sedgwick County Commissioners here:
<https://www.sedgwickcounty.org/commissioners>

Together, we can make a difference for our 4-H youth and the future of our community. Thank you for your support.

"4-H 4 U!" is a call to action, emphasizing that 4-H is for everyone—youth, families, community members, and supporters. Whether you're a participant, volunteer, sponsor, or advocate, there's a place for you in 4-H!

Steph :)

Stephanie A. Hays

4-H and Youth Development Agent

K-State Research and Extension-Sedgwick County

316-660-0112





All Livestock 4-H and FFA members have to participate in a YQCA program before being allowed to show at 4-H events this year.

Instructor-Led classes are scheduled at the Extension office (7001 W 21st St N Wichita, KS 67205) at 7:00 p.m. on **April 8th, 2025.**

You only need to attend one class. The cost for the instructor-led class is \$3.00.

On-Line classes can be found at <https://yqcaprogram.org/> and the cost is \$12.00. If you take an online class, please print your certificate. You can either email it to me or bring it to the office.

You need to set up an account for the Instructor-Led or On-Line class. Help tools at <https://www.youtube.com/watch?v=wZHW2qtMI0c> will help with enrolment for your YQCA account and course.

The Goals of YQCA are to:

- Ensure safety and well-being of animals produced by youth for showing and for 4-H and FFA projects.
- Ensure a safe food supply to consumers.
- Enhance the future of livestock industry by educating our youth on these very important issues so they can become more informed producers, consumers and/or employees in the agriculture and food industry
- Maximize the limited development time and budgets of state and national youth program leaders to provide an effective quality assurance program.
- Offer livestock shows a valid, national quality assurance certification for youth exhibitors.
- The Youth for the Quality Care of Animals national multi-species quality assurance program embraces human diversity and is committed to ensuring that its educational programs are available to youth and adults on a nondiscriminatory basis without regard to age, ancestry, color, disability, gender identity or expression, genetic information, HIV/AIDS status, military status, national origin, race, religion, sex, sexual orientation, or veteran status. This statement is in accordance with U.S. civil rights laws and the U.S. Department of Agriculture.

Livestock Events:

County:

**Spring Livestock Show - April 26, Cheney Fairgrounds, Goats 8:30 a.m. - 10:00 a.m.
(Tagging will take place at this time).**

**April 27, Cheney Fairgrounds, Swine - 10:00 a.m. -12:00 p.m.
(Tagging will take place at this time).**

Register Here:

<https://docs.google.com/forms/d/e/1FAIpQLSforMXyFYJhI9zyhdBQjY7Od96EUdsYZmg-58vVd9Vafxh9pA/viewform>

State:

K-State Invitational Meat Judging Contest, date: April 5, 2025

Location: Kansas State University, Manhattan, KS

Description: An educational opportunity for youth to enhance their meat judging skills

State Livestock Information Released

Submitted by Lexie Hayes

The information for state livestock nominations has been released. All market animals and commercial breeding females must be nominated to be eligible for the Kansas State Fair Grand Drive and/or KJLS. The process transitioned to an online system in 2022, so there are no longer paper forms for families to complete and mail.

Families will purchase DNA envelopes online in advance, submit their animal and exhibitor information online, and then mail their completed and signed DNA samples by the deadline. Extension Agents and FFA Advisors will approve nominations electronically. Exhibitors who nominated animals last year (in 2024) need to use their existing ShoWorks account. There is an option through ShoWorks to reset forgotten passwords.

The first steps for families are to locate their KSU Family Name and Nomination Number, complete their 2025 Declaration Form, and have kids renew their YQCA certification. Market Beef nominations will be due May 1, with Small Livestock and Commercial Heifer due by June 15. These are firm and final deadlines – no exceptions. The deadline to order DNA envelopes is 10 days prior to the deadline, which is April 20 for market beef and June 5 for all other species.

Information, the link to the online nomination system, and resources may be found under the “Nomination Information” tab on the youth livestock website. All families are encouraged to plan ahead, as well as use the Rookie Guide, species checklists, and other resources provided.



THANK YOU
FOR BEING A

selfless. generous. thoughtful

Volunteer

Whether you are a Community Club Leader, Club
Project Leader, Countywide Project Leader,
Livestock Superintendent, Advisory Council
Member, PDC Member, or Fair Superintendent

YOU HAVE HELPED

Make a Difference

In The Lives of 4-H Youth

The 4-H Staff Thanks You
for All You Do!!



The Association of Kansas 4-H Volunteers Board
Invites **YOU**, 4-H volunteers and 4-H parents to

Spring Into Volunteering

SAT, April

26

9AM - 3PM

K-State Polytechnic Campus - College Center Conference Room

2310 Centennial Rd, Salina, KS 67401

Admission

\$20 covers lunch and materials

Register online by April 15, 2025

<https://bit.ly/3XAGMov>

Take payment to local Extension office

Agenda:

Get Acquainted and Introductions
Personality Types and Volunteer Work
Strategies to prepare youth for real-world opportunities
Civic Engagement and Service Projects
Training Wheels Activities
4-H Volunteer Resources

K-STATE
Research and Extension



K-State Research and Extension is an equal opportunity provider and employer.

K-State Research and Extension is committed to providing equal opportunity for participation in all programs, services and activities. Accommodations for persons with disabilities may be requested by contacting: Beth Hinshaw two weeks prior to the start of the event March 31, 2025) at (bhinshaw@ksu.edu). Requests received after this date will be honored when it is feasible to do so.



VOLUNTEER OPPORTUNITY

MAY 3, 2025

**ARK RIVER
CLEANUP 2025**

9 a.m.-12 p.m.

**ALL PARTICIPATES WILL RECEIVE LUNCH
& A FREE T-SHIRT**

SEDGWICK COUNTY 4-H

**IF INTERESTED IN JOINING OUR
GROUP**

**PLEASE EMAIL LORI HOLT
@ [LIHOLT@KSU.EDU](mailto:lholt@ksu.edu)**

(REGISTRATION IS REQUIRED)

K-State Research and Extension is committed to providing equal opportunity for participation in all programs, services and activities. Accommodations for persons with disabilities may be requested by contacting: Beth Hinshaw two weeks prior to the start of the event March 31, 2025) at (bhinshaw@ksu.edu).

Requests received after this date will be honored when it is feasible to do so.

Interior Design Project Changes

To all 4-H members enrolled in the Interior Design & Architecture project announcing changes to state fair classes and invitations to scheduled zoom meetings/virtual project meetings.

This year, a complete revision to the Interior Design & Architecture section in the State Fair Book. We have been working with faculty members in the Interior Architecture Department the past several months to create new project materials and state fair classes that better align with design thought processes and learning activities.

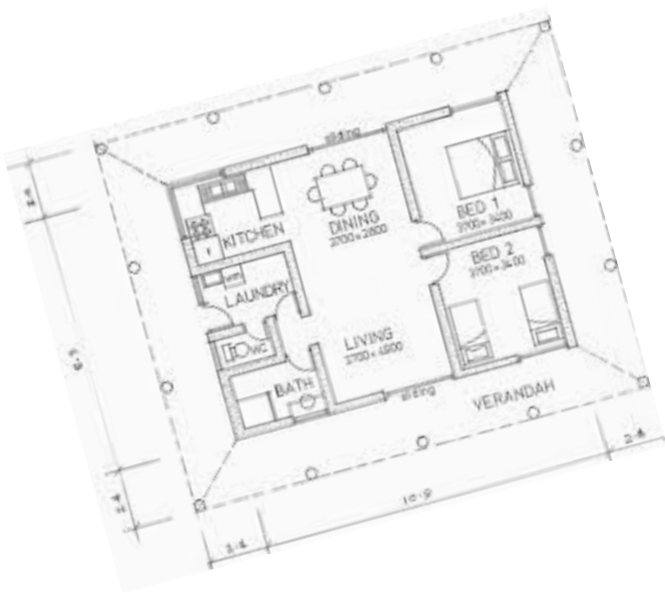
During the upcoming virtual project meetings for 4-H project members, we will discuss changes to the state fair classes and Interior Architecture faculty will be on hand to talk to the youth about how to get started.

We will be hosting an upcoming zoom meeting on Feb. 6 at 10:00 a.m. for extension agents & support staff and virtual project meetings for 4-H youth and parents on Feb. 12 and Mar. 12, both at 7:00 p.m. If someone cannot join in person, the meetings will all be recorded for viewing at a later date.

In person project experiences:

Saturday, April 12, 2025 – All 4-H Interior Design & Architecture project members are invited to the K-State Open House; Interior Architecture Dept. in Seaton Hall. K-State students and faculty will be available to help 4-H members get started with the construction of a marble maze.

June – Discovery Days Class with Interior Architecture Dept. – hands on learning experience.



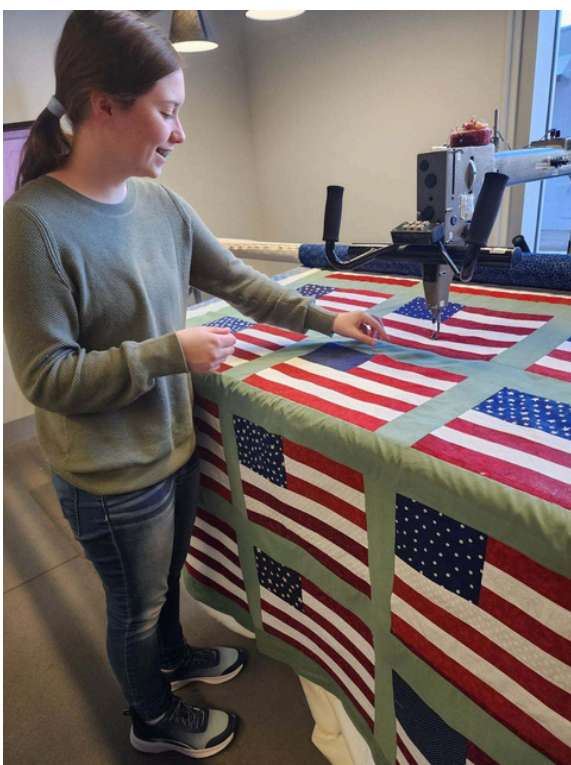
4-H Youth Making a Difference!

Save the Date – Planning Meeting for 4-H “Play Day” at Kansas Wildlife Exhibit

Calling all Sedgwick County 4-H families,
I’m excited to share that Victor Harding is working with the Friends of the Kansas Wildlife Exhibit to organize a 4-H-themed “Play Day” on July 26 at the Kansas Wildlife Exhibit. The event will likely begin at 11 a.m., and we’re eager to start planning!

Victor and his mother will be setting up a planning meeting, and they would love to invite anyone in the county who is interested in helping make this event a success.

More details will be shared soon, but in the meantime, please save the date for the event itself, and let us know if you'd like to be involved in the planning process. Thanks for your support in spreading the word about how great Sedgwick County 4-H is!!!



QOV Highlights

The Valley Victors 4-H group of Valley Center and 4-H Fiber Arts of Sedgwick County, Kansas supports the Wichita Area QOV. On January 3, 2025, 10 Fiber Arts members sewed the blocks for a quilt with guidance from member Genna Crouch. Genna led this group in making the blocks for a quilt for a veteran she met at a local grocery store when selling Scout popcorn in the fall. Click [here](#) to read the Threads Newsletter March 2025 Issue for more of the story on page 5.

Exciting Opportunity

for 4-H Youth to Take Their Skills to Another Level

I'm reaching out to invite you organization and families to visit us, and kids to participate in hands-on learning opportunities in our spring entrepreneur markets. Below is our schedule for this spring for you to share with parents:

April 12, 10 a.m. - 4 p.m. Park City Areen hosted by Kansas Home Educators

April 19, 10 a.m. - 3 p.m. Jurassic Egg Hunt Field Station: Dinosaurs

April 26, 9 a.m.- 4 p.m. Sedgwick County Park - All German Car Show

June 1, 1 p.m. - 4 p.m. Riverfest on Douglas Street

Parents can register their children ages 5-17 for their very own booth at <https://childrensentrepreneurmarket.com/markets/?state=156&metro=181>

In the meantime, I'd like to introduce myself and the non-profit organization I work with, to explore potential future collaborations. I'm involved with the [Children's Entrepreneur Market](#) a non-profit that empowers children to run their own mini-businesses selling products like handmade crafts, food, and games. It's similar to a farmer's market, but with children as the vendors!

We take care of all the logistics, including registrations, marketing, and set-up, and we even carry our own insurance. Our markets typically attract 50-100 families who enjoy supporting the young entrepreneurs and experiencing other activities at the event.

I believe our market could be a fun addition to your fall events and would love to hear your thoughts. Here's a quick video that shows what our markets look like: <https://drive.google.com/file/d/1VAFgVZ1QJCyJL76sHqAJ8RNV6KSb5iDT/view> this sounds interesting, I'd be delighted to discuss how we can collaborate.

Thank you for your time and consideration.

Erica Webster

Wichita Market Manager

www.childrensentrepreneurmarket.com

wichita@childrensentrepreneurmarket.com



TEEN COUNCIL ACTIVITIES

For more information contact:

Lori Holt

316-660-0111

llholt@ksu.edu

Sedgwick County Extension Office



Sedgwick County
4-H invites you to

.....
**JOIN THE 4-H
TEEN COUNCIL**

*Meeting Times
4th Monday night of every
month
7:00 p.m.
Extension Office*

Open to any Sedgwick County 4-H Youth ages 13 and over.

Sedgwick County 4-H Teen Council provides an opportunity to work within your community with younger 4-Hers, participate in community service projects, get to know 4-H Teens from other county clubs and participate in leadership conferences and workshops.

📌 **Monday, April 7 – 4-H Hall Setup for KAE4-HA Annual Meeting**

🕒 3:00 PM- | Location: 4-H Hall

Help us set up and prepare for the Kansas Association of Extension 4-H Agents' State Meeting. This is a great way to support the professionals who help make 4-H possible!

📌 **Saturday, May 3 – Ark River Cleanup 2025**

🕒 9:00 a.m. - 12:00 p.m. | Location: 151 North Main Street, Wichita, KS 67202

Join us for a morning of giving back by helping clean up our community! All participants will receive lunch and a free t-shirt as a thank-you for their hard work.—Need to sign up soon to participate

📌 **Tuesday, July 8 – Concession Stand at the Sedgwick County Fair**

🕒 8:00 a.m. - 5:00 p.m. | Location: 4-H Building, Sedgwick County Fairgrounds

Help run the 4-H concession stand during the fair. It's a fun way to interact with the public and support 4-H fundraising efforts!

📌 **Wednesday, July 9 – Food Sales at the 4-H Building**

🕒 5:00 p.m. - 8:00 p.m. | Location: 4-H Building, Sedgwick County Fairgrounds

Assist with food sales to help raise funds for 4-H programs while enjoying the fair atmosphere!

📌 **Sunday, July 20 – Cleanup After the Bird Fair**

🕒 Around 3:00 p.m. | Location: Sedgwick County 4-H Office

Help us clean up and organize after the Bird Fair. Your teamwork will make a big difference! Why Join Us?



✓ Build leadership and teamwork skills

✓ e back to 4-H and the community

✓ ve fun with fellow Teen Council members!

We appreciate your support and dedication! If you're available to help at any of these events, please let Lori Holt at llholt@ksu.edu or 316-660-0111 know as soon as possible.



2024-2025 Calendar of Events



- April 17 Youth Entrepreneurship Challenge, Manhattan April TBD Spring Livestock Show
April TBD National 4-H Conference, Washington D.C.
- May 1 Bucket Calf, Sheep, Swine, Meat Goat, Poultry and Rabbit owned by date
May 1 Horse I.D. papers due to Extension Office
May 1 KSF/KJLS Beef nominations due
May 3 Shutterbug Workshop, Wichita Botanica
May 29 Tractor Safety, more information to come
May 30 All livestock pre-entries due (beef, bucket calf, heifers, sheep, swine, goats, rabbits, poultry, all breeding livestock and Horse show entries)
- June 5 Last day to order small animal DNA envelopes
June 4-6 Kansas 4-H Discovery Days, Kansas State University
June/July 4-H Camp, Rock Springs Ranch
June 13 Style Revue, Creative Tables and Pets pre-entries due
June TBD Kansas 4-H Insect Spectacular
June 15 KSF/KJLS Sheep, Swine Goats, Commercial Heifers nominations due
June 20 All static pre-entries due
June 26 Style Revue Judging, Creative Tables Judging, Pets Judging and Public Style Revue Sedgwick County Extension Center
- July 6 Static Building Set-up, 3:30 p.m. - 5:30 p.m.
July 8 Static Entries, 8:00 a.m. - 10:00 a.m., Cheney Fair Grounds
July 8 Static Judging begins 10:00 a.m. until completed
July 9 4-H Horse Show
July 9-12 Sedgwick County Fair
August 1 State Fair Entries due to the Extension Office
August 16 State 4-H Horticulture Judging Contest, K-State Manhattan Campus
- September 4 State Fair Entry day for Static Exhibits, Hutchinson
September 5-14 Kansas State Fair, Hutchinson
- October 18-19 State 4-H Dog Conference, Rock Springs
- November 22-23 Kansas Youth Leadership Forum, Rock Springs
November 22-23 Kansas Association of 4-H Volunteers Forum, Rock Springs



2025 SPRING GARDEN FAIR
Hosted by Sedgwick County Extension Master Gardeners
Wichita Area Garden Club Information

- WHEN:** Saturday, May 3, 2025
7:00 a.m. to 1:00 p.m.
- WHERE:** Sedgwick County Extension, 4-H Hall
7001 W. 21st North, Wichita KS
- BOOTHS:** Booths should provide activities which are plant or garden related. Garden clubs may sell plants and promote club memberships. Having an education component is suggested but is not required. Event staff will determine the placement of individual booths. The event theme is: **Water – Every Drop Counts**
Water-Smart Gardening for a Greener Tomorrow
- TABLES:** One table (size 2' by 8') will be provided. Additional tables may be requested and will be approved based on available space. Tables and chairs will be in place by 1:00 p.m. Friday May 2nd, for early set-up. Waterproof table coverings will be provided and must cover the table. Decorative skirting is allowed. ***There is no charge for the event.***
- SET-UP:** Friday, May 2, 2025, 1:00 p.m. to 6:30 p.m.
Saturday, May 3, 2025, 6:30 a.m. to 7:00 a.m.
- TAKE DOWN:** Booths should be set up and staffed during all times the event is open. All materials must be removed by 2:00 p.m. following the event. Garden clubs are responsible for staffing their booth throughout the event, and cleaning up its booth space, equipment and supplies following the event.
- QUESTIONS?** Sylvia McCombs at: skmccombs9@gmail.com or call at: 316-640-7583

**Return Completed Registration Form by March 28th. To: Sylvia McCombs, Garden Club Event Liaison at:
4845 N. Homestead St. Bel Aire, KS 67220 or to the email above.**

K-State Research and Extension is an equal opportunity provider and employer. K-State Research and Extension is committed to providing equal opportunity for participation in all programs, services and activities. Program information may be available in languages other than English. Language access requests and reasonable accommodations for persons with disabilities, including alternative means for communication (e.g., Braille, large print, audio tape, and American Sign Language), may be requested by contacting the event contact Matthew McKernan four weeks prior to the start of the event (April 5, 2025) at (316)-660-0140 or mckernan@ksu.edu. Requests received after this date will be honored when it is feasible to do so. Language access services, such as interpretation or translation of vital information will be provided free of charge to limited English proficient individuals upon request. Kansas State University Agricultural Experiment Station and Cooperative Extension Service.



*Sedgwick County...
working for you*

K-STATE
Research and Extension
Master Gardener
Sedgwick County

2025 SPRING GARDEN FAIR REGISTRATION FORM
Must be returned by Friday March 28, 2025

GARDEN CLUB/ORGANIZATION: _____

CONTACT PERSON: _____

ADDRESS: _____ CITY/STATE/ZIP: _____

PHONE(S): _____ E-MAIL: _____

BOOTH NEEDS:

ELECTRICITY NEEDED: ____ YES ____ NO (extension cords are NOT provided)

NUMBER OF TABLES: 1

ADDITIONAL TABLES REQUESTED: _____ (approval based on available space)

NUMBER OF CHAIRS: _____

FEATURES OF MY SPRING GARDEN FAIR BOOTH (Select all that apply):

____ Membership Drive ____ Education ____ Demonstration ____ Sales

____ Other (please specify): _____

Booths With Retail Sales, check one:

____ My current Kansas Department of Revenue (KDOR) registration number is: _____ (for Sales Tax Purposes)

____ I do not have a current KDOR registration number and choose to use the special event registration for the Spring Garden Fair (as I do not participate in more than two events a year and will remit taxes immediately after the event). Special Event Registration #: _____

____ I do not have a current KDOR registration number and will apply for one before the event as I participate in more than two events a year. Prior to the event, I will provide the number to the Spring Garden Fair vendor chairperson, Valorie White at vw4339@cox.net.

____ I do not plan to have any items for sale at my booth, and therefore do not require a KDOR registration number

PLEASE READ THE FOLLOWING CAREFULLY AND SIGN WHERE INDICATED

I understand that my participation in The Spring Garden Fair is by invitation only and that I agree to abide by all the rules and regulations of the Sedgwick County Extension Education Center as well as guidelines set forth in the information provided with this Registration Form. I will cooperate fully with all Master Gardeners and Sedgwick County Extension personnel and will demonstrate common courtesy at all times to all visitors, vendors, exhibitors, Master Gardeners, and Extension personnel.

All federal, state, and local laws governing retail sales tax must be followed. I understand the rules and regulations of the event and will comply. I will display my current KDOR registration certificate or the special event certificate during the event. I realize that failure to comply may result in expulsion from the event.

I further agree to hold harmless K-State Research & Extension - Sedgwick County and the Sedgwick County Extension Master Gardeners for any damages, or the cost of defending any claims that may be assessed against or brought against K-State Research & Extension - Sedgwick County or the Sedgwick County Extension Master Gardeners by any person, business or organization as the result of participating in the Spring Garden Fair.

SIGNATURE: _____ DATE: _____

Return to: Spring Garden Fair Liaison, Sylvia McCombs, at skmccombs9@gmail.com
Or 4845 No. Homestead St. Bel Aire KS 67220

Please retain a copy for your records.



K-STATE

Research and Extension

Stephanie Hays

4-H Agent

Sedgwick County Extension

7001 W. 21st St. N.

Wichita, KS 67205

Phone: (316) 660-0112

Email: sahays@ksu.edu

Lori Holt

4-H Program Manager

Sedgwick County Extension

7001 W. 21st St. N.

Wichita, KS 67205

Phone: (316) 660-0111

Email: llholt@ksu.edu

Sophia Zurschmiede

4-H Program Assistant

Sedgwick County Extension

7001 W. 21st St. N.

Wichita, KS 67205

Phone: (316) 660-0112

Email: esz@ksu.edu

Cathy Jones

4-H Program Assistant

Sedgwick County Extension

7001 W. 21st St. N.

Wichita, KS 67205

Phone: (316) 660-0113

Email: cpjones@ksu.edu

Barbara Wingfield

Office Professional

Sedgwick County Extension

7001 W. 21st St. N.

Wichita, KS 67205

Phone: (316) 660-0115

Email: bwingfie@ksu.edu